

Statligt Ramavtal - Möbler och inredning

Delområde – Arbetsplats och Förvaring



Muuto

Produktlista nr 1



31% Rabatt skall dras av angivna priser

ABEvertLindelöfInredningsservice

556071-3462

Avtalsnummer 23.3-8004-18:051

ABEvertLindelöf.

31% Rabatt skall dras av angivna priser

KAMMARKOLLEGIET ARBETE FÖRVARING Q2 2022

APRIL

Q2—2022



The Muuto Price List is a complete and comprehensive tool that contains all relevant information to formulate an order. On this page, you will find important product and order information. Please contact Muuto Customer Care or your Muuto Sales Manager if you need further information.

Prices

Contract prices are stated excl. VAT and ex. works.
Prices are valid from 13.04.2022
All prices are subject to change.

Warranty

According to Muuto's general terms of sale and delivery:
10 years on all BIFMA-tested products.
5 years on all other products.

Discontinued Products

Products marked with *** will be discontinued when out of stock.

Customers Own Material (COM) & Customers Own Leather (COL)

Price includes the cost to upholster the product using the customer's own material. The cost of the material is not included in the price. All COM/COL requests are subject to testing and approval. Lead times stated in the price list are based on when the factory receives the material.

Test Samples

Muuto offers sourcing of non-standard textiles for upholstered products. Muuto will provide pricing on products in non-standard textile and confirm if a textile is subject to test upholstery. Prices for test sample products are stated in the pricelist under each product. If textile is provided to Muuto, Muuto will invoice COM price as defined in the price list and potentially the price for the test upholstery. Lead-time of production is confirmed by Muuto after test approval. Confirmed lead times are from reception of textile.

MOQ

Minimum Order Quantity.

MOQ Fee

A MOQ fee is applied when the stated MOQ is not met.

Start Up Fee

The cost to produce a product in a special color and/or non standard size.

Ready-To-Ship

Indicates products that are ready to be shipped

Lead Times

Lead times are stated excluding transport from the Muuto warehouse.

Colli

Colli indicates the number of items per item number.

Shipper Colli

Shipper Colli indicates the number of boxes shipped per item.

Test, Labels & Certificates

Our supply chain is constantly evolving; please confirm conformance to the attributes of the given test at the time of specifying your order as information is subject to change.

Contact Information

www.muuto.com/contact

Explore our new perspectives on Scandinavian design across furniture, lighting and accessories. Each design within our collection has its own family page with designer quote, product description, material information, cleaning instructions and more, followed by the pricing options for each individual variant.

INTRODUCTION TO THE PRICE LIST	1	ACCESSORIES		MATERIAL OVERVIEW	36
INDEX	2	Arrange Desktop Series	17	UPHOLSTERY OVERVIEW	38
		Compile Bookend	25	GENERAL TERMS OF SALE AND	
FURNITURE		Restore Series	27	DELIVERY	45
Compile Shelving System	4	Restore Basket	28		
Compile Shelving System Configurations		Restore Tray	29		
Compile Shelving System Shelf	13	Restore Round Basket	30		
Compile Shelving System Essential Pack		Sketch Toolbox	31		
Compile Shelving System Divider Pack	14	Story Pinboard	33		
	15	COLOR CODE INDEX	35		

FURNITURE

COMPILE SHELVING SYSTEM

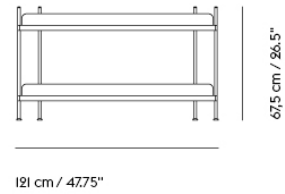
"Storage is important because it is so universal: everybody needs good solutions. The inspiration for the Compile Shelving System was indeed the everyday storage situation. The design, with its logical construction, parallels to a certain degree an unpretentious Scandinavian lifestyle—one shelf represents one building unit while the length of the tube defines the shelf height. In this simple way one can assemble practical formations that fit individual needs—Compile should reflect and accommodate the life of which it is part."

— Cecilie Manz



Designed by	Cecilie Manz / 2016
Environment	Indoor
Country of Production	Poland
Assembly Required	Yes
Description	A contemporary take on the classic shelving system. Compile consists of a shelf and three heights of dividing tubes. Arrange the shelves and tubes as you please or order from the prearranged configurations.
Material	Powder coated steel.
Cleaning & Care	Remove dust from shelves with a soft cloth.
Additional Product Information	Compile systems should always be mounted to a wall, using wall brackets. A Compile Shelving System can hold up to 300 kg / 660 lbs. Compile Shelving Systems can be built as tall as wanted, as long as they are mounted to a wall using brackets. Muuto recommends not building Compile systems higher than 225 cm / 88.6".
	TESTS & CERTIFICATIONS
EN 16121:2013*	Test severity I. Non-domestic storage furniture. Requirements for safety, strength, durability and stability.
EN 16122:2012*	Domestic and non-domestic storage furniture. Test method for the determination of strength, durability and stability.
	*Both tests were conducted using a 180 cm / 70.75" shelving configuration with wall brackets attached to the wall.
ANSI/BIFMA X5.9-2019	American National Standard For Office Furnishings – Storage Units.

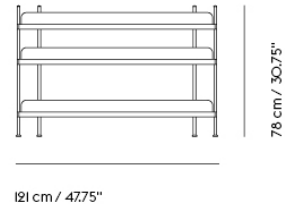
COMPILE SHELVING SYSTEM / CONFIGURATION I



Colli	1
Shipper Colli	3
Gross Weight (kg)	22.74
Net Weight (kg)	18.27
Warranty Period	10 years

Item No.	Color	Contract Price	Lead Time
Ready-To-Ship			
50051	Black	SEK 4.858,10	-
50052	Grey	SEK 4.858,10	-
50053	White	SEK 4.858,10	-

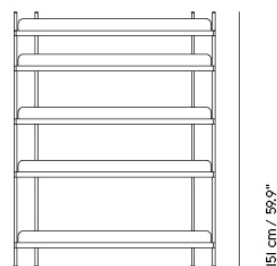
COMPILE SHELVING SYSTEM / CONFIGURATION 2



Colli	1
Shipper Colli	4
Gross Weight (kg)	33.55
Net Weight (kg)	27.11
Warranty Period	10 years

Item No.	Color	Contract Price	Lead Time
Ready-To-Ship			
50055	Black	SEK 6.922,10	-
50056	Grey	SEK 6.922,10	-
50057	White	SEK 6.922,10	-

COMPILE SHELVING SYSTEM / CONFIGURATION 3



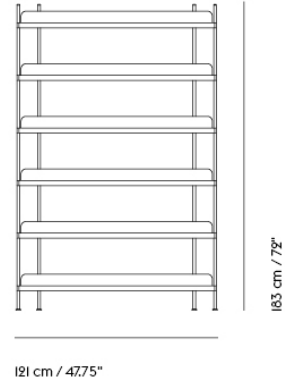
121 cm / 47.75"

151 cm / 59.9"

Colli	1
Shipper Colli	6
Gross Weight (kg)	55.96
Net Weight (kg)	45.49
Warranty Period	10 years

Item No.	Color	Contract Price	Lead Time
Ready-To-Ship			
50060	Black	SEK 11.175,70	-
50061	Grey	SEK 11.175,70	-
50062	White	SEK 11.175,70	-

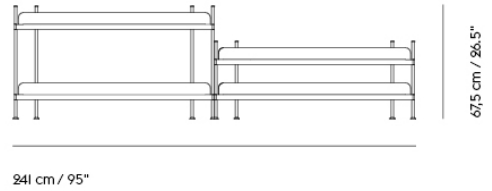
COMPILE SHELVING SYSTEM / CONFIGURATION 4



Colli	1
Shipper Colli	7
Gross Weight (kg)	67.16
Net Weight (kg)	54.69
Warranty Period	10 years

Item No.	Color	Contract Price	Lead Time
Ready-To-Ship			
50065	Black	SEK 13.325,70	-
50066	Grey	SEK 13.325,70	-
50067	White	SEK 13.325,70	-

COMPILE SHELVING SYSTEM / CONFIGURATION 5

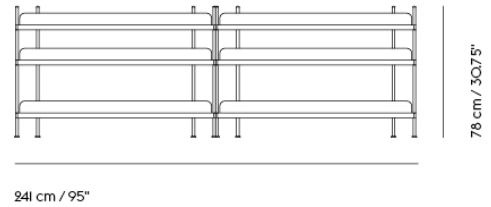


Colli	1
Shipper Colli	5
Gross Weight (kg)	44.85
Net Weight (kg)	36.24
Warranty Period	10 years

Item No.	Color	Contract Price	Lead Time
Ready-To-Ship			
50070	Black	SEK 9.885,70	-
50071	Grey	SEK 9.885,70	-
50072	White	SEK 9.885,70	-

COMPILE SHELVING SYSTEM / CONFIGURATION 6

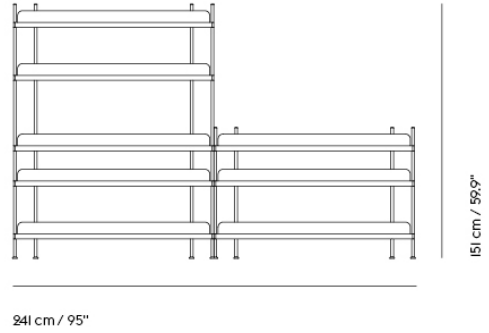
10



Colli	1
Shipper Colli	7
Gross Weight (kg)	66.81
Net Weight (kg)	54.21
Warranty Period	10 years

Item No.	Color	Contract Price	Lead Time
Ready-To-Ship			
50075	Black	SEK 14.185,70	-
50076	Grey	SEK 14.185,70	-
50077	White	SEK 14.185,70	-

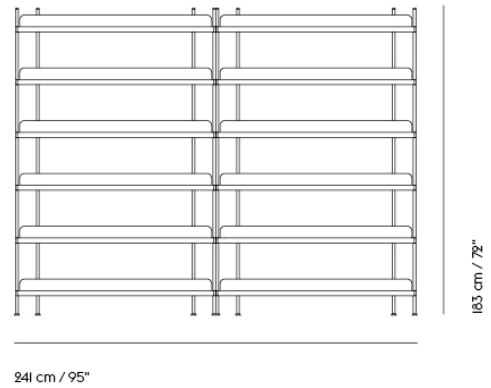
COMPILE SHELVING SYSTEM / CONFIGURATION 7



Colli 1
 Shipper Colli 9
 Gross Weight (kg) 89.22
 Net Weight (kg) 72.6
 Warranty Period 10 years

Item No.	Color	Contract Price	Lead Time
Ready-To-Ship			
50080	Black	SEK 19.345,70	-
50081	Grey	SEK 19.345,70	-
50082	White	SEK 19.345,70	-

COMPILE SHELVING SYSTEM / CONFIGURATION 8



Colli	1
Shipper Colli	13
Gross Weight (kg)	134.03
Net Weight (kg)	109.39
Warranty Period	10 years

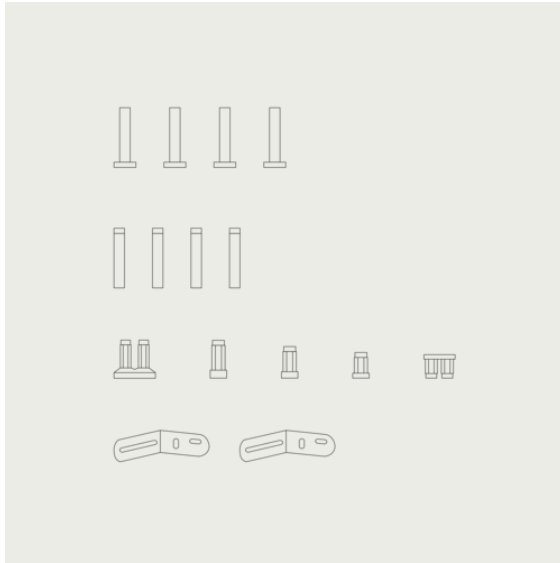
Item No.	Color	Contract Price	Lead Time
Ready-To-Ship			
50085	Black	SEK 27.515,70	-
50086	Grey	SEK 27.515,70	-
50087	White	SEK 27.515,70	-



Colli 1
 Shipper Colli 1
 Gross Weight (kg) 10.67
 Net Weight (kg) 8.7

Item No.	Color	Contract Price	Lead Time
Ready-To-Ship			
50003	Black	SEK 2.106,10	-
50002	Grey	SEK 2.106,10	-
50001	White	SEK 2.106,10	-

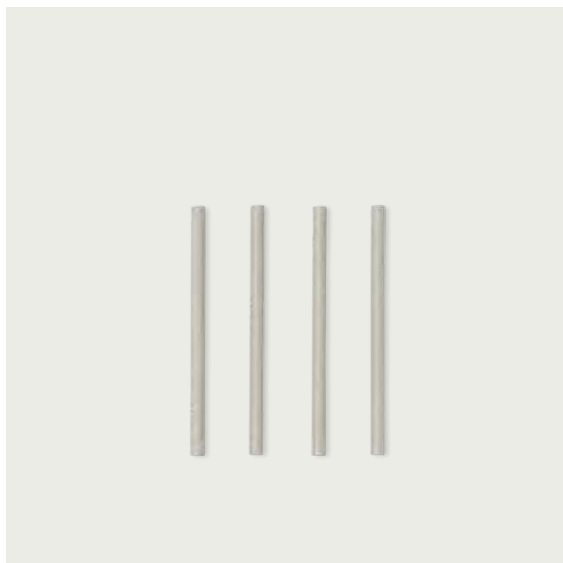
COMPILE SHELVING SYSTEM ESSENTIAL PACK



Colli 1
 Shipper Colli 1
 Gross Weight (kg) 0.5
 Net Weight (kg) 0.3178

Item No.	Color	Contract Price	Lead Time
Ready-To-Ship			
50013	Black	SEK 804,10	-
50012	Grey	SEK 804,10	-
50011	White	SEK 804,10	-

COMPILE SHELVING SYSTEM DIVIDER PACK



Colli 1
 Shipper Colli 1
 Gross Weight (kg) 0.6
 Net Weight (kg) 0.5527

Item No.	Color	Contract Price	Lead Time
Ready-To-Ship			
50043	Black - Large	SEK 288,10	-
50033	Black - Medium	SEK 288,10	-
50023	Black - Small	SEK 288,10	-
50042	Grey - Large	SEK 288,10	-
50032	Grey - Medium	SEK 288,10	-
50022	Grey - Small	SEK 288,10	-
50041	White - Large	SEK 288,10	-
50031	White - Medium	SEK 288,10	-
50021	White - Small	SEK 288,10	-

ACCESSORIES

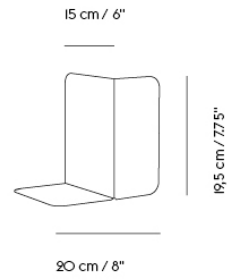
COMPILE BOOKEND

"The Compile Bookend adds a sculptural feature to your shelving system, with clear lines and multiple display options for your favorite books and magazines. The bookend supports itself, ensuring unrestricted movement and creative freedom of use. It serves as a functional element, adding color and character to shelves at home or in the office."

— Cecilie Manz



Designed by	Cecilie Manz / 2016
Environment	Indoor
Country of Production	Sweden
Description	The Compile Bookend is an elegant compliment to any bookshelf, windowsill or desk. It can be placed in several positions to accommodate books of differing sizes. With its clean geometric shape and various colors, the Compile Bookend brings a refined statement to any scenery.
Material	Made from laser cut steel sheets, bent to form, and then coated with high quality powder.
Cleaning & Care	Clean with moist cloth.



Colli 1
 Shipper Colli 1
 Gross Weight (kg) 1.026
 Net Weight (kg) 0.8
 Warranty Period 5 years

Item No.	Color	Contract Price	Lead Time
Ready-To-Ship			
50092	Beige-Green	SEK 313,90	-
50093	Grey	SEK 313,90	-
50091	Plum	SEK 313,90	-

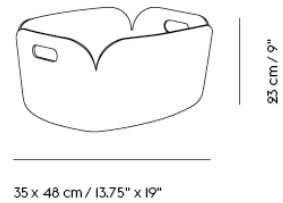
RESTORE SERIES

"I wanted for the Restore Series to have a humble character, allowing for it to easily fit into any environment. With its felt material made using fibers from recycled plastic bottles, the Restore Series has a curious and inviting expression while its corner slits bring a distinct look and added functionality to the design."

— Mika Tolvanen

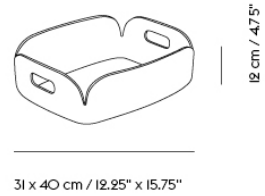


Designed by	Mika Tolvanen / 2009
Environment	Indoor
Country of Production	China
Description	Made from a felt made of recycled plastic bottle fibers, the Restore Series is a functional and versatile storage unit that can be used for almost any object from laundry to blankets to children's toys. The Restore Series comes in a variety of colors and offers a textural, quirky addition to any home or professional space.
Material	The material is PET felt fibers. A percentage of the product comes from recycled plastic bottles, which are granulated, heated and blown like little fibers that are subsequently dyed. The fibers are worked together like mats, which can be pressed over heat-influenced forms that enables the material to maintain its shape.
Cleaning & Care	Vacuum. If necessary use moist cloth.



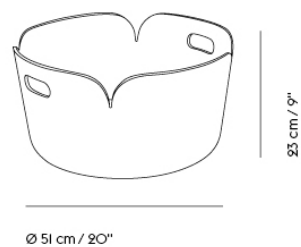
Colli 1
 Shipper Colli 1
 Gross Weight (kg) 0.9
 Net Weight (kg) 0.8
 Warranty Period 5 years

Item No.	Color	Contract Price	Lead Time
Ready-To-Ship			
07008	Black	SEK 752,50	-
07005	Black Mélange	SEK 752,50	-
07026	Blue-Grey	SEK 752,50	-
07020	Burnt Orange	SEK 752,50	-
07027	Dark Green	SEK 752,50	-
07010	Dusty Green	SEK 752,50	-
07012	Grey Mélange	SEK 752,50	-
07006	Midnight Blue	SEK 752,50	-
07019	Sand	SEK 752,50	-
07009	Yellow	SEK 752,50	-



Colli	1
Shipper Colli	1
Gross Weight (kg)	0.55
Net Weight (kg)	0.5
Warranty Period	5 years

Item No.	Color	Contract Price	Lead Time
Ready-To-Ship			
13300	Black	SEK 614,90	-
13306	Black Mélange	SEK 614,90	-
13303	Dusty Green	SEK 614,90	-
13301	Grey Mélange	SEK 614,90	-
13307	Midnight Blue	SEK 614,90	-



Colli	1
Shipper Colli	1
Gross Weight (kg)	1.2
Net Weight (kg)	1.2
Warranty Period	5 years

Item No.	Color	Contract Price	Lead Time
Ready-To-Ship			
13328	Aqua ***	SEK 902,10	-
13320	Black	SEK 902,10	-
13326	Black Mélange	SEK 902,10	-
13323	Dusty Green	SEK 902,10	-
13321	Grey Mélange	SEK 902,10	-
13327	Midnight Blue	SEK 902,10	-

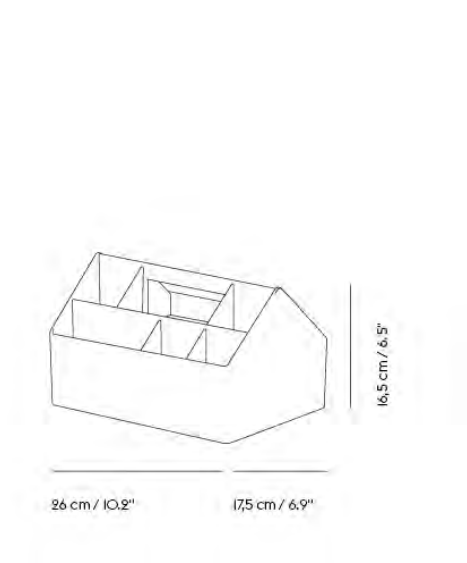
SKETCH TOOLBOX

"The Sketch Toolbox is a small, friendly piece of architecture for the desk, helping you organize your tools and objects. Inspired by the simple architecture of houses, the design brings functionality and versatility with its compartments in various depths, alongside the handle, making it easy to move around. Made using 91% recycled plastic the Sketch Toolbox is a friendly companion for daily life, whether in the home office, a workplace, the bathroom or wherever you might find yourself needing a bit of modern storage. "

— Thomas Bentzen



Designed by	Thomas Bentzen / 2022
Environment	Indoor
Country of Production	Denmark
Description	With a straightforward, functional design referencing the simple architectural lines of a house, Sketch Toolbox offers various rooms to accommodate a broad range of functions and needs in modern personal storage. Cast in one monolithic piece with a handle for portability, it is a friendly companion in daily life – at home, in the workshop or the nomadic workplace. The versatile toolbox is manufactured in Denmark using minimum 91% recycled plastic.
Material	Produced using minimum 91% recycled ABS plastic from post-consumer waste.
Cleaning & Care	Clean with a moist cloth. If necessary, use a little dish soap on the cloth.



Colli 8
 Shipper Colli 1
 Gross Weight (kg) 0.95
 Net Weight (kg) 0.8
 Warranty Period 5 years

Item No.	Color	Contract Price	Lead Time
Ready-To-Ship			
12341	Burnt Orange	SEK 403,30	-
12342	Grey	SEK 403,30	-
12343	Midnight Blue	SEK 403,30	-

COLOR CODE INDEX

PRODUCT

Compile Configuration 1 - Black
 Compile Configuration 1 - Grey
 Compile Configuration 1 - White
 Compile Configuration 2 - Black
 Compile Configuration 2 - Grey
 Compile Configuration 2 - White
 Compile Configuration 3 - Black
 Compile Configuration 3 - Grey
 Compile Configuration 3 - White
 Compile Configuration 4 - Black
 Compile Configuration 4 - Grey
 Compile Configuration 4 - White
 Compile Configuration 5 - Black
 Compile Configuration 5 - Grey
 Compile Configuration 5 - White
 Compile Configuration 6 - Black
 Compile Configuration 6 - Grey
 Compile Configuration 6 - White
 Compile Configuration 7 - Black
 Compile Configuration 7 - Grey
 Compile Configuration 7 - White
 Compile Configuration 8 - Black
 Compile Configuration 8 - Grey
 Compile Configuration 8 - White
 Compile Divider Pack - Large - Black
 Compile Divider Pack - Large - Grey
 Compile Divider Pack - Large - White
 Compile Divider Pack - Medium - Black
 Compile Divider Pack - Medium - Grey
 Compile Divider Pack - Medium - White
 Compile Divider Pack - Small - Black
 Compile Divider Pack - Small - Grey
 Compile Divider Pack - Small - White
 Compile Essentials Pack - Black
 Compile Essentials Pack - Grey
 Compile Essentials Pack - White
 Compile Shelf - Black
 Compile Shelf - Grey
 Compile Shelf - White
 Arrange Desk Tray-Copper Brown – 12x25cm/4.8" x9.6"
 Arrange Desk Tray-Dark Green – 32x25cm/12.6" x9.6"
 Arrange Desk Tray-Grey – 12x25cm/4.7" x9.6"
 Arrange Desk Tray-Grey – 25x25cm/9.6" x9.6"
 Arrange Desk Tray-Grey – 32x25cm/12.6" x9.6"
 Arrange Desktop Series - Config 1
 Compile Bookend - Green-Beige
 Compile Bookend - Grey
 Compile Bookend - Plum
 Sketch Toolbox - Burnt Orange
 Sketch Toolbox - Grey
 Sketch Toolbox - Midnight Blue

COLOR CODES

Black (RAL 9011)
 Grey (RAL 7044)
 White (RAL 9003)
 Black (RAL 9011)
 Grey (RAL 7044)
 White (RAL 9003)
 Black (RAL 9011)
 Grey (RAL 7044)
 White (RAL 9003)
 Black (RAL 9011)
 Grey (RAL 7044)
 White (RAL 9003)
 Black (RAL 9011)
 Grey (RAL 7044)
 White (RAL 9003)
 Black (RAL 9011)
 Grey (RAL 7044)
 White (RAL 9003)
 Black (RAL 9011)
 Grey (RAL 7044)
 White (RAL 9003)
 Black (RAL 9011)
 Grey (RAL 7044)
 White (RAL 9003)
 Black (RAL 9011)
 Grey (RAL 7044)
 White (RAL 9003)
 Black (RAL 9011)
 Grey (RAL 7044)
 White (RAL 9003)
 Black (RAL 9011)
 Grey (RAL 7044)
 White (RAL 9003)
 Black (RAL 9011)
 Grey (RAL 7044)
 White (RAL 9003)
 SYSTALEN I1405 tc 007
 SYSTALEN I3503 gn 008
 SYSTALEN I3404 gr 001
 SYSTALEN I3404 gr 001
 SYSTALEN I3404 gr 001
 SYSTALEN I3404 gr 001
 SYSTALEN I3404 gr 001
 SYSTALEN I3404 gr 001
 Green-Beige (Pantone 4525C)
 Grey (RAL 7030)
 Plum (NCS S6020-Y9OR)
 NCS S 2060-Y4OR
 RAL 7044
 NCS S 8010-R70B

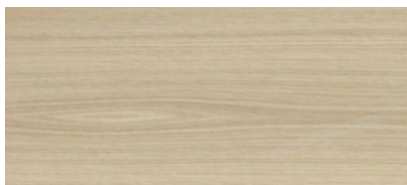
NEAREST MATCH

NCS S 8500-N, Pantone 426 C
 NCS S 2502-Y, Pantone 413 C
 NCS-S 0603 G40-Y, Pantone cool grey I C
 NCS S 8500-N, Pantone 426 C
 NCS S 2502-Y, Pantone 413 C
 NCS-S 0603 G40-Y, Pantone cool grey I C
 NCS S 8500-N, Pantone 426 C
 NCS S 2502-Y, Pantone 413 C
 NCS-S 0603 G40-Y, Pantone cool grey I C
 NCS S 8500-N, Pantone 426 C
 NCS S 2502-Y, Pantone 413 C
 NCS-S 0603 G40-Y, Pantone cool grey I C
 NCS S 8500-N, Pantone 426 C
 NCS S 2502-Y, Pantone 413 C
 NCS-S 0603 G40-Y, Pantone cool grey I C
 NCS S 8500-N, Pantone 426 C
 NCS S 2502-Y, Pantone 413 C
 NCS-S 0603 G40-Y, Pantone cool grey I C
 NCS S 8500-N, Pantone 426 C
 NCS S 2502-Y, Pantone 413 C
 NCS-S 0603 G40-Y, Pantone cool grey I C
 NCS S 8500-N, Pantone 426 C
 NCS S 2502-Y, Pantone 413 C
 NCS-S 0603 G40-Y, Pantone cool grey I C
 NCS S 8500-N, Pantone 426 C
 NCS S 2502-Y, Pantone 413 C
 NCS-S 0603 G40-Y, Pantone cool grey I C
 NCS S 8500-N, Pantone 426 C
 NCS S 2502-Y, Pantone 413 C
 NCS-S 0603 G40-Y, Pantone cool grey I C
 NCS S 8500-N, Pantone 426 C
 NCS S 2502-Y, Pantone 413 C
 NCS-S 0603 G40-Y, Pantone cool grey I C
 NCS S 8500-N, Pantone 426 C
 NCS S 2502-Y, Pantone 413 C
 NCS-S 0603 G40-Y, Pantone cool grey I C
 NCS S 4040 – Y7OR
 NCS S 6010 – B7OG
 NCS S 2500-N
 NCS S 2500-N
 NCS S 2500-N
 -
 RAL 090 70 30, NCS 3030-Y
 NCS-S 4502-Y, Pantone 423 C
 RAL Design 030 40 20
 -
 -
 -

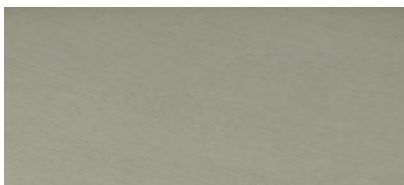
MATERIAL TEXTURES

At Muuto, we use an expanded breadth of materials to express our ideas of new perspectives on Scandinavian design. Working with leading suppliers across the world, we strive to use materials that embody our quality standards to provide designs that'll pass the test of time and bring a modern touch to any space at one and the same time. Explore the various textures of materials that are used throughout the Muuto universe.

WOOD



Ash



Full Colored Lacquered Oak



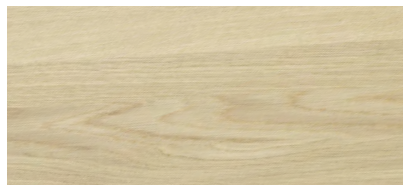
Lacquered MDF



Oak Veneer



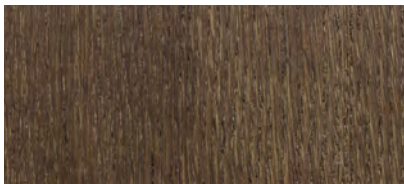
Solid Oak, Natural Oil



Solid Oak White Pigmented Oil

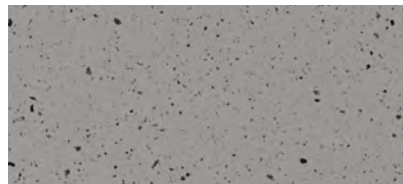


Oregon Pine

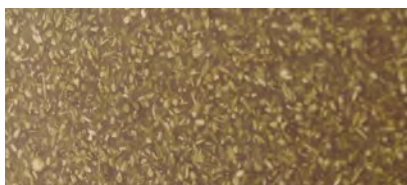


Stained Dark Brown Oak Veneer

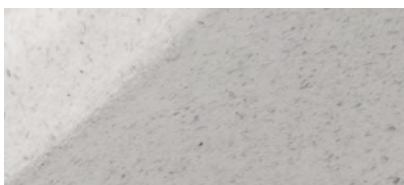
STONE ACRYLIC COMPOSITE



PLASTIC & WOOD COMPOSITE

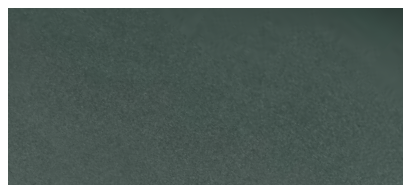


Bamboo Wood & Plastic Composite



Wood & Plastic Composite

RECYCLED PLASTIC



METAL



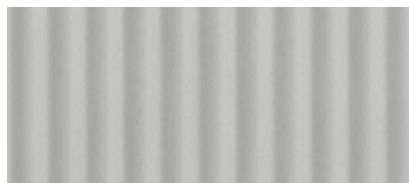
Anodized Aluminum



Lacquered Steel



Solid Brass Aluminum

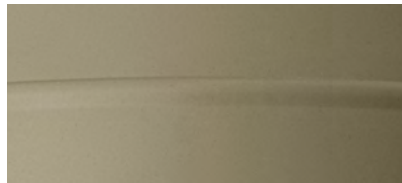


Lacquered Aluminum

POLYMER FELT



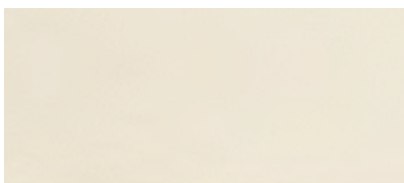
SILICONE RUBBER



LINOLEUM



LAMINATE



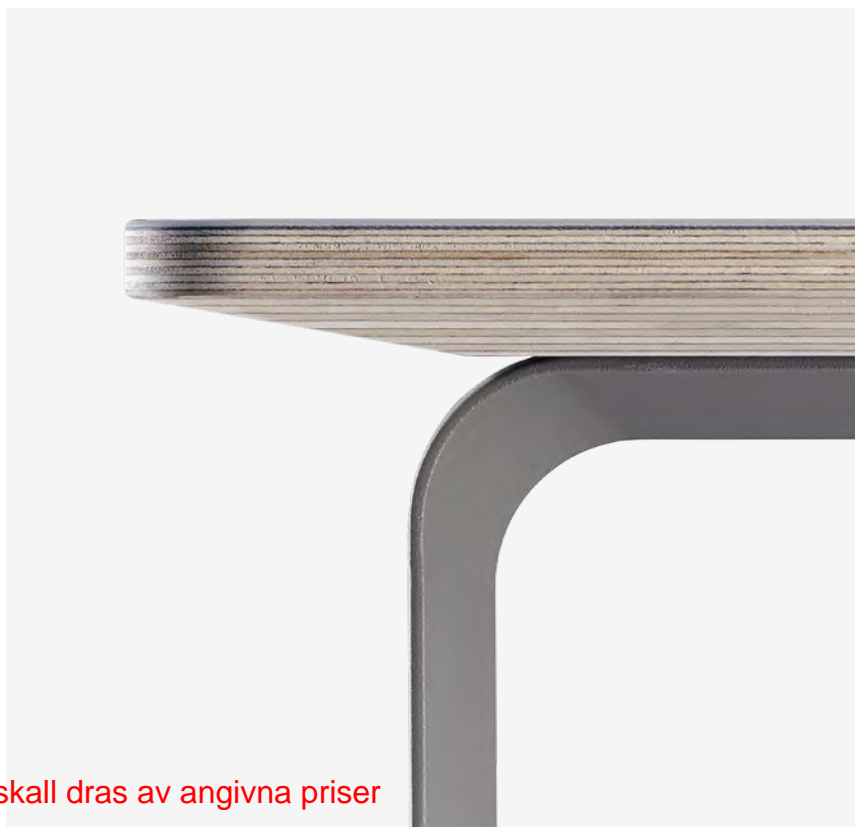
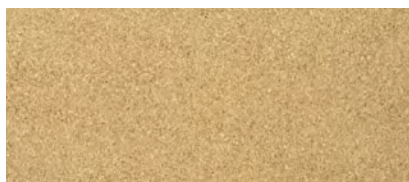
NANOLAMINATE



CERAMICS



CORK






31% Rabatt skall dras av angivna priser

TEXTILE OPTIONS

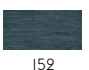
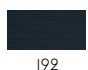

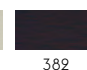

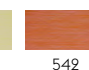
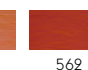
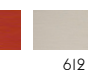
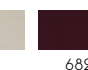
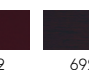



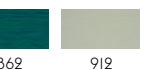

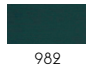


Striving to work with the best suppliers, the textiles used for Muuto products are by four different companies: Danish Kvadrat and Swedish Nevotex along with both Arve from Italy and Rohlede from Germany—all suppliers that have been selected on the basis of their extensive knowledge within the field and state-of-the-art material qualities.

*Upholstered Muuto products that have the Declare Living Building Challenge Compliant certification only have the certification when upholstered with the following Kvadrat textiles: Canvas, Clara, Divina, Divina MD, Divina Mélange, Fiord, Hallingdal, Remix, Rime, Steelcut, Steelcut Trio and Vidar.





BALDER BY KVADRAT
 Designer: Fanny Aronsen.
 Composition: 68% new wool, 26% cotton, 6% nylon.
 Durability: 100.000 Martindale / Lightfastness 6.
 Sustainability: Natural fibres / Sustainable resource. Complies with Greenguard Gold Certification.








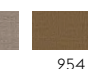
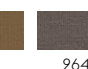

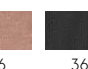


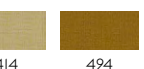





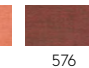
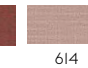
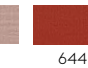
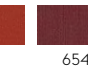
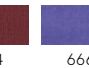
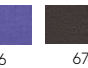

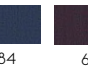
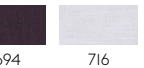






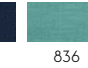
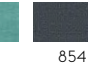

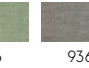
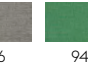
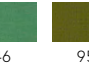




132

CANVAS BY KVADRAT
 Designer: Giulio Ridolfo.
 Composition: 90% new wool worsted, 10% nylon.
 Durability: 100.000 Martindale / Lightfastness 5-7 (ISO 1-8).
 Sustainability: Complies with both EU ecolabel "The Flower" and Greenguard Gold Certification.

114

CLARA BY KVADRAT
 Designer: Anne Birgitte Hansen.
 Composition: 92% new wool worsted.
 Durability: 80.000 Martindale.
 Sustainability: Complies with both EU ecolabel "The Flower" and Greenguard Gold Certification.






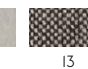
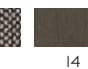
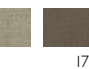

144

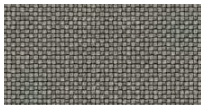
													
													

CLAY BY KVADRAT
 Designer: Vincent Van Duysen for Kvadrat.
 Composition: 76% Linen, 21% Cotton, 3% Polyester.
 Durability: 45.000 Martindale / Lightfastness 4-6.
 Sustainability: Complies with Greenguard Certification.

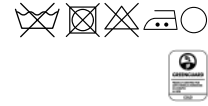

1

									
---	---	---	---	---	---	---	---	---	---

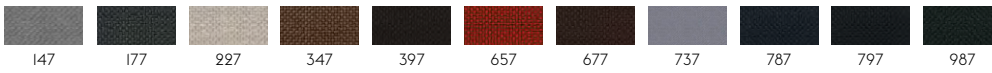


COLLINE 2 BY KVADRAT

Designer: Frans Dijkmeijer for Kvadrat.
 Composition: 75% new wool worsted, 17% polyacrylic, 8% nylon.
 Durability: 100.000 Martindale / Lightfastness 7.
 Sustainability: Complies with Greenguard Gold Certification.



127

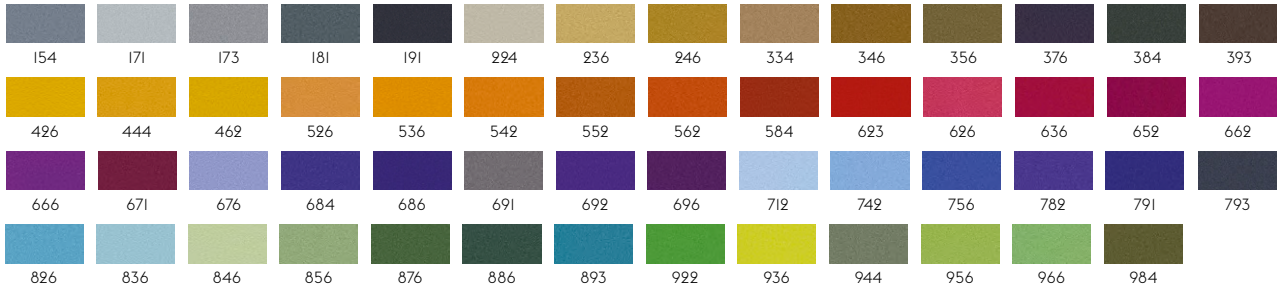


DIVINA BY KVADRAT

Designer: Finn Sködt.
 Composition: 100% new wool.
 Durability: 45.000 Martindale / Lightfastness 5-6.
 Sustainability: Complies with both EU ecolabel "The Flower" and Greenguard Gold Certification.

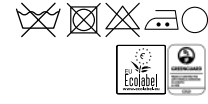


106

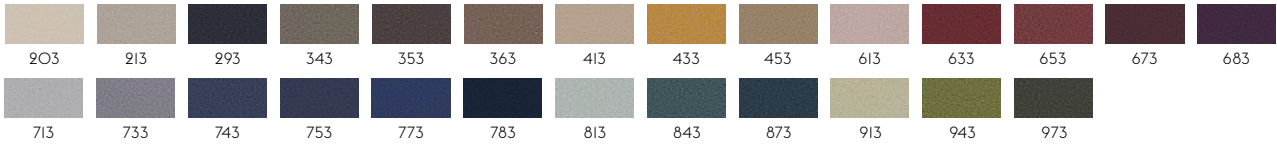


DIVINA MD BY KVADRAT

Designer: Finn Sködt.
 Composition: 100% new wool.
 Durability: 45.000 Martindale / Lightfastness 5-6 (ISO 1-8).
 Sustainability: Complies with both EU ecolabel "The Flower" and Greenguard Gold Certification.

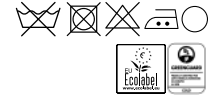


193

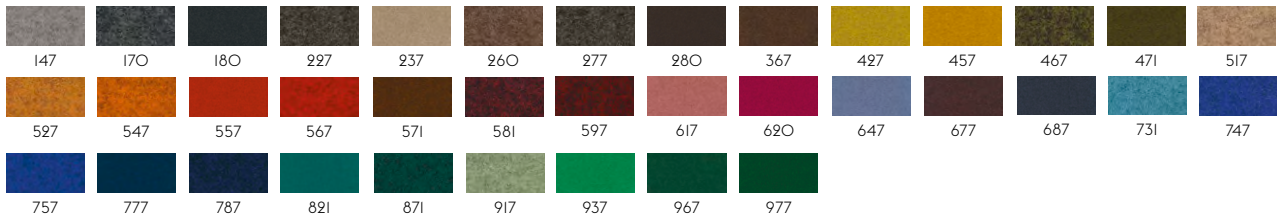


DIVINA MELANGE BY KVADRAT

Designer: Finn Sködt.
 Composition: 100% new wool.
 Durability: 45.000 Martindale / Lightfastness 6-7.
 Sustainability: Complies with both EU ecolabel "The Flower" and Greenguard Gold Certification.

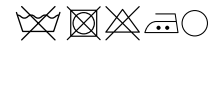


120

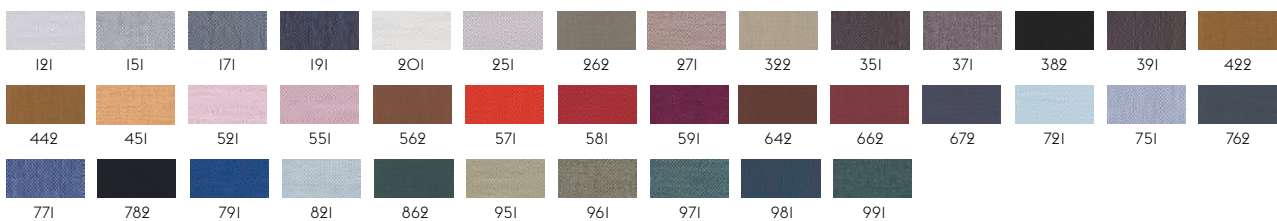


FIORD BY KVADRAT

Designer: Tone Barnung & Louise Sigvardt.
 Composition: 92% new wool worsted, 8% nylon.
 Durability: 60.000 Martindale / Lightfastness 5-6.



101





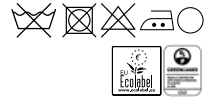
HALLINGDAL 65 BY KVADRAT

Designer: Nanna Ditzel.

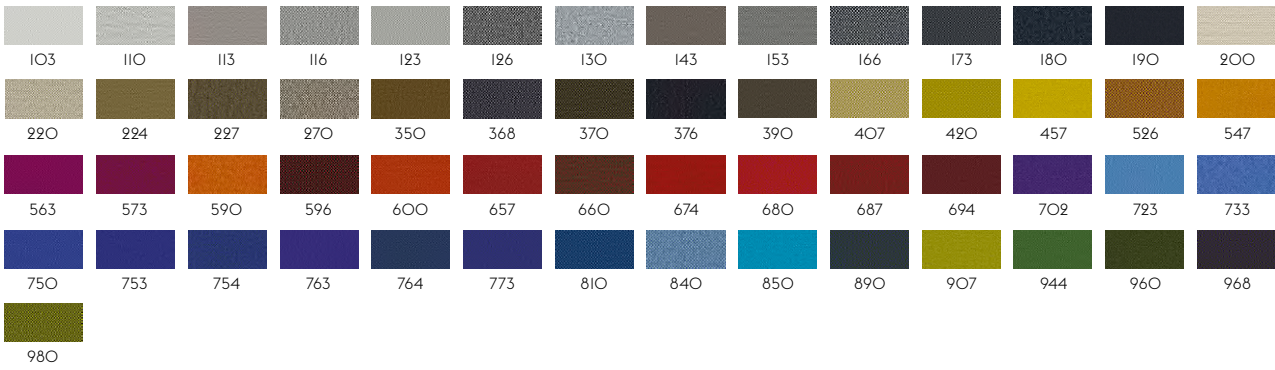
Composition: 70% new wool, 30% viscose.

Durability: 100.000 Martindale / Lightfastness 6-7.

Sustainability: Complies with both EU ecolabel "The Flower" and Greenguard Gold Certification.



100



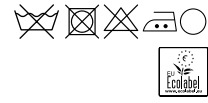
HERO BY KVADRAT

Designer: Patricia Urquiola.

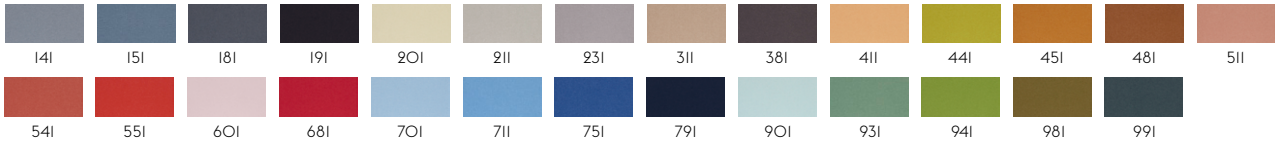
Composition: 96% new wool, 4% nylon.

Durability: 45.000 Martindale / Lightfastness 5-6.

Sustainability: Complies with EU ecolabel "The Flower".



101



OCEAN BY ROHLEDER

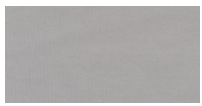
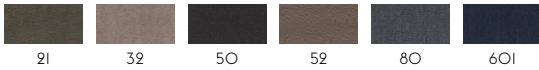
Designer: Rohleder.

Composition: 74% Polyacrylic / 26% Polyester.

Durability: 30.000 Martindale / Lightfastness 5-7 (ISO 1-8).



3



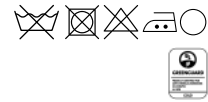
PLANUM BY KVADRAT

Designer: Raw Color.

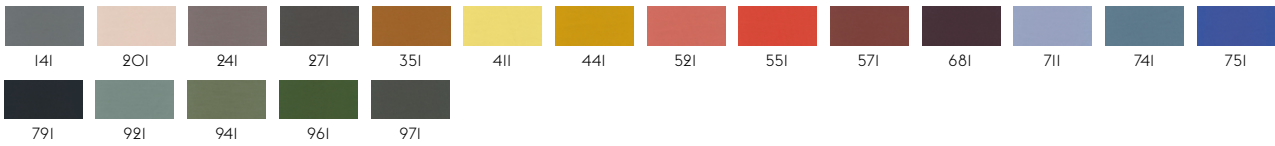
Composition: 44% new wool, 42% polyester, 14% nylon.

Durability: 100.000 Martindale / Lightfastness 5-6 (ISO 1-8).

Sustainability: Complies with Greenguard Certification.



111



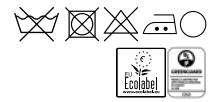
RE-WOOL BY KVADRAT

Designer: Margrethe Odgaard.

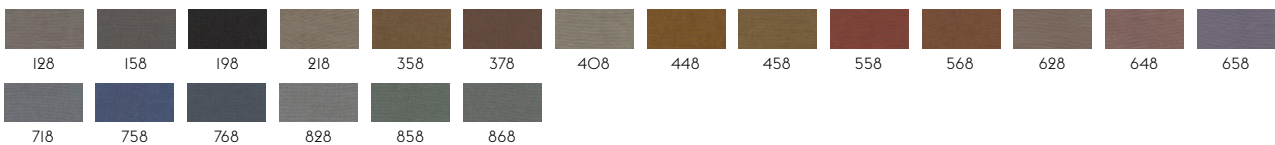
Composition: 45% new wool worsted, 45% recycled wool, 10% nylon.

Durability: 100.000 Martindale / Lightfastness 5-7 (ISO 1-8).

Sustainability: Complies with both EU ecolabel "The Flower" and Greenguard Gold Certification.



108



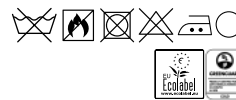
**REMIX BY KVADRAT**

Designer: Giulio Ridolfo.

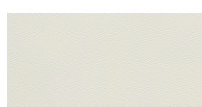
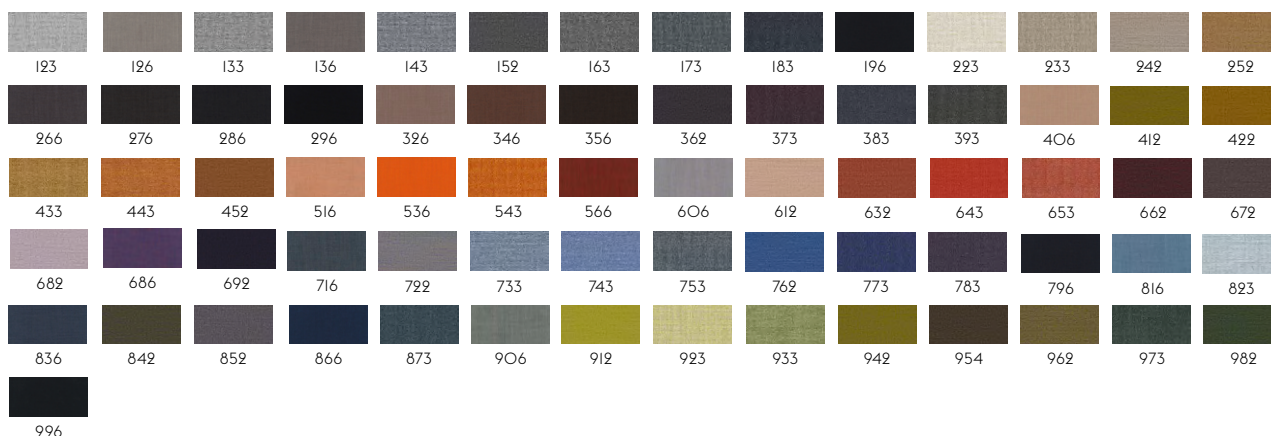
Composition: 90% new wool worsted, 10% nylon.

Durability: 100.000 Martindale / Lightfastness 5-7 (ISO 1-8).

Sustainability: Complies with both EU ecolabel "The Flower" and Greenguard Gold Certification.



113

**RIME BY KVADRAT**

Designer: Åsa Pärson.

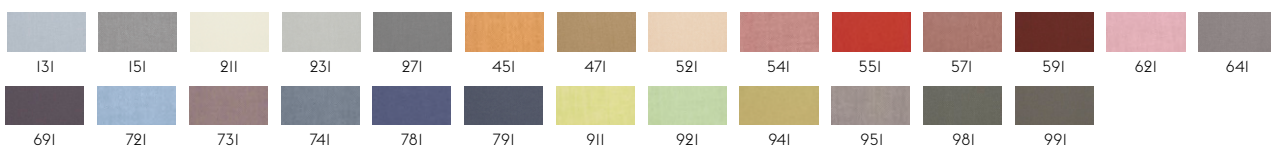
Composition: 90% new wool worsted, 10% nylon.

Durability: 100.000 Martindale / Lightfastness 5-7 (ISO 1-8).

Sustainability: Complies with both EU ecolabel "The Flower" and Greenguard Gold Certification.



111

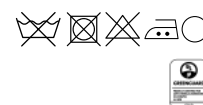
**SABI BY KVADRAT**

Designer: Louise Sigvardt for Kvadrat.

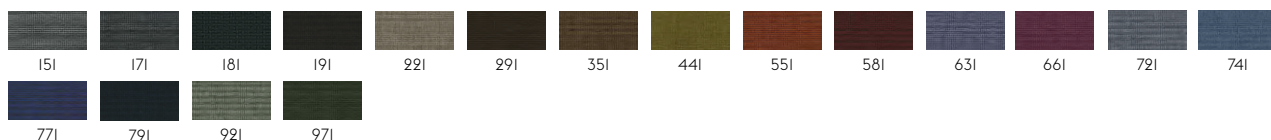
Composition: 65% new wool worsted, 23% recycled wool, 12% nylon.

Durability: 80.000 Martindale / Lightfastness 5-7.

Sustainability: Complies with Greenguard Gold Certification.



121

**STEELCUT BY KVADRAT**

Designer: Dijkmeijer & Ridolfo.

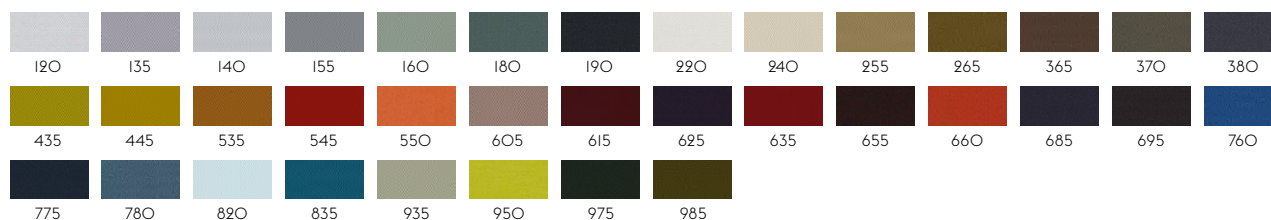
Composition: 90% new wool worsted, 10% nylon.

Durability: 80.000 Martindale / Lightfastness 5-7 (ISO 1-8).

Sustainability: Complies with both EU ecolabel "The Flower" and Greenguard Gold Certification.



110





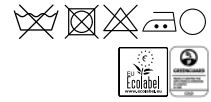
STEELCUT TRIO BY KVADRAT

Designer: Dijkmeijer & Ridolfo.

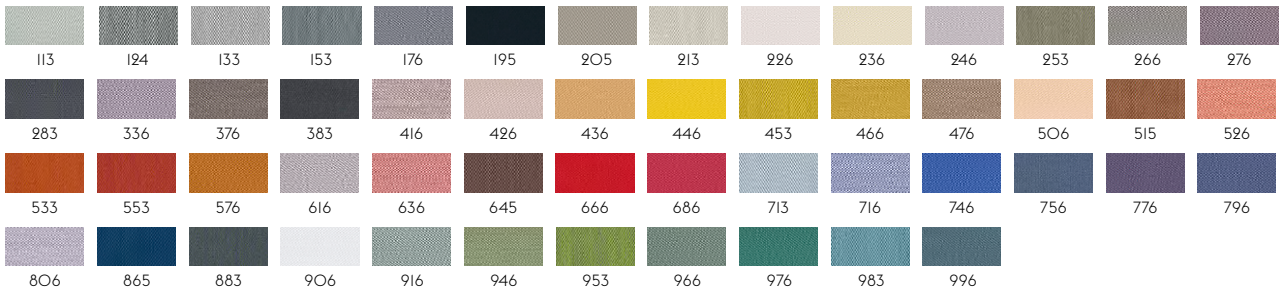
Composition: 90% new wool worsted, 10% nylon.

Durability: 100.000 martindale / Lightfastness 5-7 (ISO 1-8).

Sustainability: Complies with both EU ecolabel "The Flower" and Greenguard Gold Certification.



105



STILL BY KVADRAT

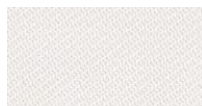
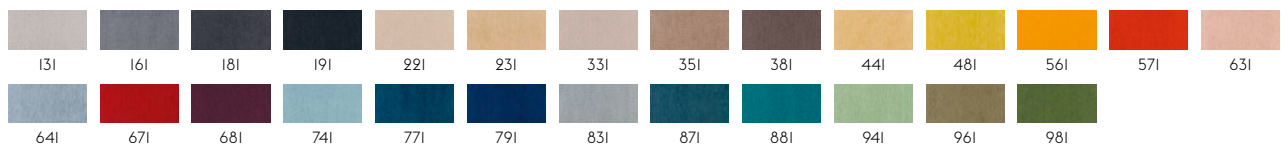
Designer: Georgina Wright.

Composition: 100% Trevira CS.

Durability: 50.000 Martindale / Lightfastness: 6



111



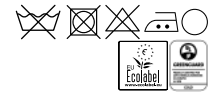
TWILL WEAVE BY KVADRAT

Designer: Jonathan Olivares.

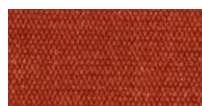
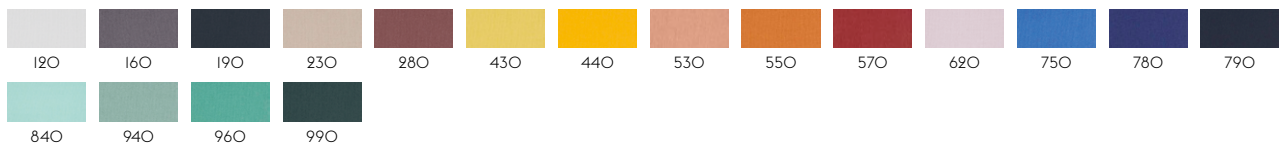
Composition: 90% new wool (worsted), 10% nylon.

Durability: 60.000 Martindale / Lightfastness 5-7 (ISO 1-8).

Sustainability: Complies with both EU ecolabel "The Flower" and Greenguard Gold Certification.



110



VANCOUVER BY ROSSINI DELLA QUERCIA

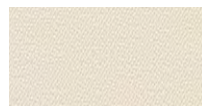
Designer: Gabriella Zecca

Composition: 52% cotton, 48% acrylic.

Durability: 40.000 Martindale / Lightfastness 4-5.



4



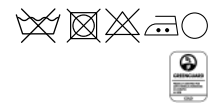
VIDAR BY KVADRAT

Designer: Raf Simons & Fanny Aronsen for Kvadrat.

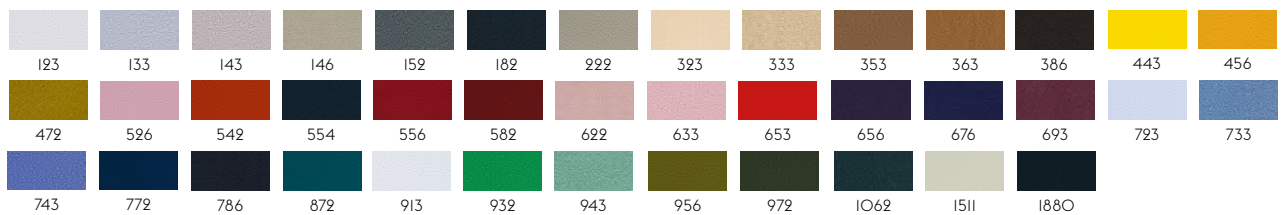
Composition: 94% new wool, 6% nylon.

Durability: 100.000 Martindale / Lightfastness 6-7.

Sustainability: Natural fibres / Sustainable resource. Complies with Greenguard Gold Certification.



106





WOOLY BY NEVOTEX

Designer: Nevotex

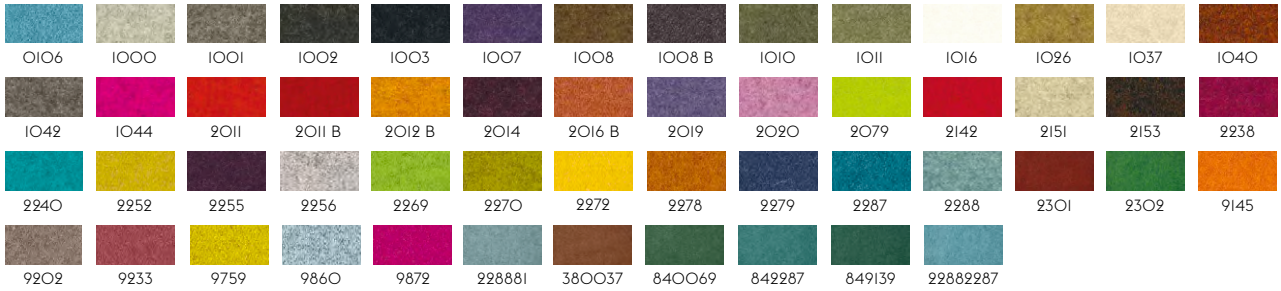
Composition: 70% wool, 25% polyamide, 5% other fibres.

Durability: 150.000 Martindale / Lightfastness 6-8.



0091

Wooly is woven in 70% recycled wool, sourced from leftover materials of clothing production and other wool products. One kilo of pure new wool generates 9 kilograms of carbon dioxide when produced while processing one kilo of recycled wool only generates 0.5 kilograms of carbon dioxide. Furthermore, recycled wool has a positive environmental impact due to lessened water consumption and lower energy consumption.



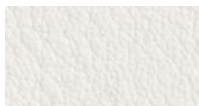
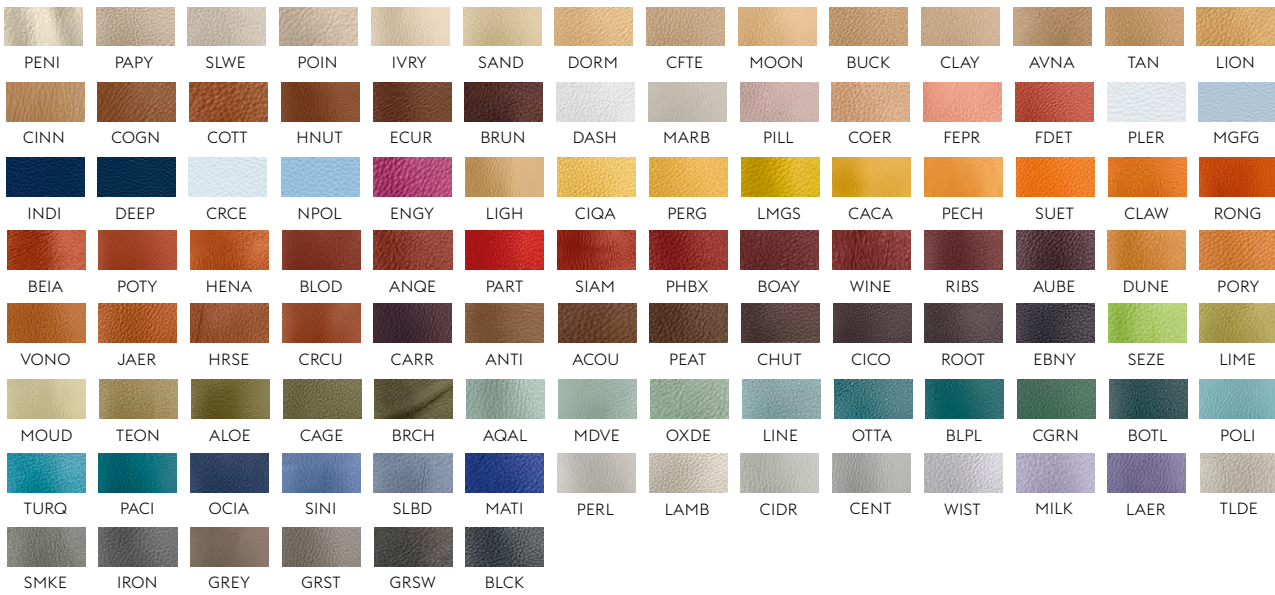
LEATHER OPTIONS

At Muuto, we work with some of the leading European leather suppliers to ensure that the leather used for our designs is always of the highest possible standard. Our leather options range from the Refine Leather, a modern and sleek full-grain leather with a soft touch, over Easy Leather, a lightly buffed natural grain leather with a soft and waxy feel along with a matte look, to our Endure Leather, a pliable and extremely durable semi-aniline leather ideal for hard contract environments, and the Faux Leather, being particularly suitable for healthcare and education environments as it is resistant to disinfectants.



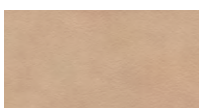
EASY LEATHER
Lightly Buffed Natural Grain Leather
Raw material: Designed and processed in Italy. The leather is dyed through, chrome tanned and finishing is with resins and pigments.

ZINC



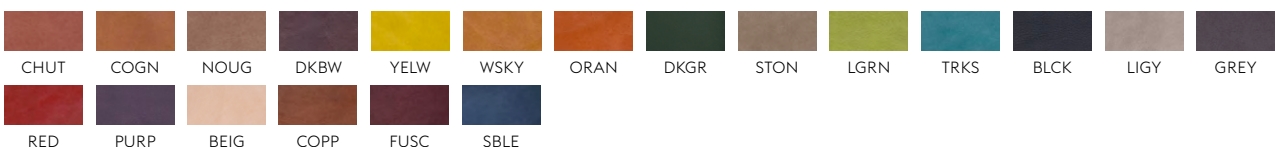
ENDURE LEATHER
Semi-aniline leather with high durability, making it ideal for contract environments.
Raw material: Leather from Scandinavian raw hides.
The leather is dyed through a chrome free tanning process. Also available in custom colors in a minimum of 1 hide.

CWIT



REFINE LEATHER
Aniline Leather.
Raw material: Grain leather from European raw hides. The leather is dyed through, chrome tanned and produced without the use of PCP and CFC which can be damaging to the environment.

CREM



AB Event Lindelöf.



Stockholm
Hornsgatan 29
118 49 Stockholm

Tel. 08-442 70 00
info.avtal@lindelof.se

Östersund
Hornsgatan 29
118 49 Stockholm

Tel. 08-442 70 00
info.avtal@lindelof.se



31% Rabatt skall dras av angivna priser